

NETAGENT

MINI SNMP



TECHNICAL SPECIFICATION

Contents

<i>Chapter1. Introduction</i>	3
1.1 Features	3
1.2 Applications	4
1.3 Specifications	5
<i>Chapter2. Functional Description</i>	6
Section1. Web page user interface	6
■ Information > UPS Status	6
■ Information > System Status	6
■ Information > Remote Control	8
■ Configuration > UPS Configuration	9
■ Configuration > UPS On/Off Schedule	10
■ Configuration > Network	12
■ Configuration > SNMP	13
■ Configuration > Notification	14
■ Configuration > Web/Telnet/FTP	15
■ Configuration > System	16
■ Log Information	17
■ Management > File Manager	18
■ Management > Serial Port Debug	19
■ Management > About	20
Section2. Free software	21
2.1 Netility	21
2.2 SNMPView	22
2.3 SMS server	22
2.4 ClientMate	23

Chapter1. Introduction

1.1 Features

DS801 is the SNMP (Simple Network Management Protocol) card for monitoring UPS. It could remote control the UPS and get the current status of the UPS.

DS801 is for “RS232” interface UPS and the communication protocol includes MegaTec, and Megatec Three Phase. DS801 provides a simple and easy installation procedure. CD provides along with DS801 offers several software to allow the user to configure IP address, central monitoring and multi shutdown on different operating systems. Other advance configurations could be accomplished in the Web browser.

Features:

- 1) Provide SNMP MIB to monitor & control UPS.
- 2) Auto-sense 10M/100M Fast Ethernet, manage and configure via Telnet, Web Browser or NMS.
- 3) Support TCP/IP, UDP, SNMP, Telnet, SSH, SNTP, PPP, HTTP, HTTPS, SMTP, FTP, FTPS Protocols.
- 4) Providing easy setup and upgrade tools via our Netility software.
- 5) Send SNMP TRAP, e-mail and SMS for events notification.
- 6) Auto email daily UPS history report.
- 7) Perform graceful shutdown with our ClientMate software.

1.2 Applications

■ DS801 allows UPS to be monitor on network.

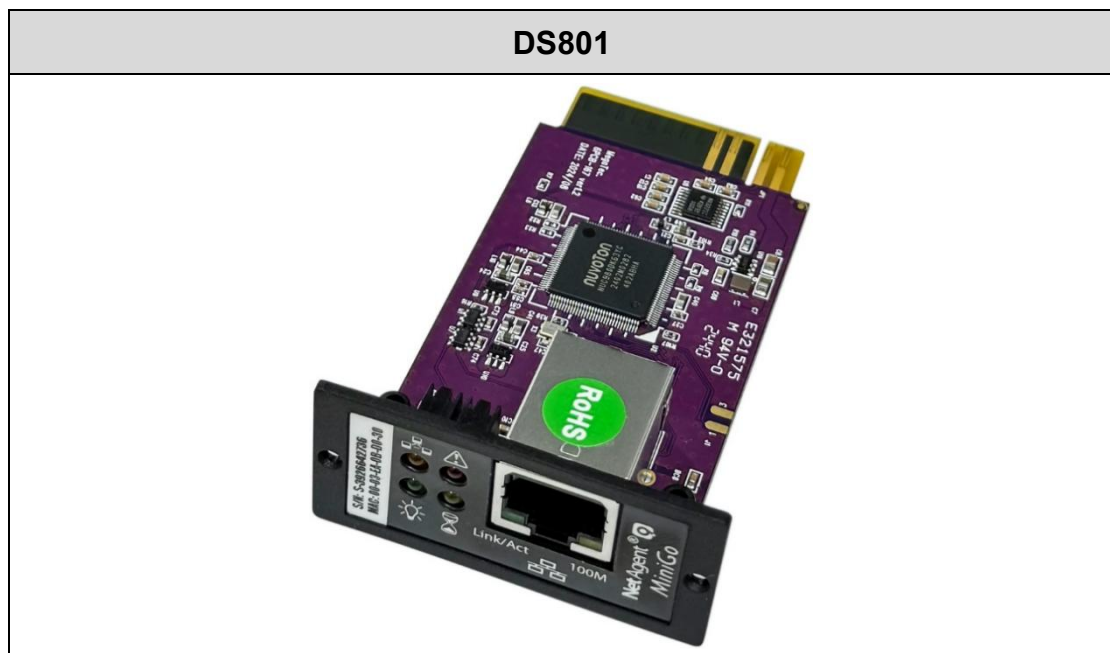
When the UPS connects with DS801, the system manager could check each UPS condition by a computer with Browser installed. The manager could monitor and control the UPS by simply input the IP address of the DS801, which connects to the UPS. When there is a power abnormal condition happens, the DS801 could also send the trap information to the system manager to take proper action.

■ DS801 Provides Shutdown Utilities.

When a computer install our shutdown software in the network that connects to the DS801, when UPS is in AC failure condition or Battery Low condition, the software would close all the files of the operating system and shutdown gracefully. This could avoid system corrupt when a power disconnection happened.

1.3 Specifications

CPU	ARM 300MHz 32bit
System Clock	300MHz
Flash Memory	128M Byte
SD RAM	64M Byte
LED	6
Watch Dog	YES
Real Time Clock	NO
LAN Interface	10M / 100M UTP
Ethernet Throughput	1620KB per seconds
Ethernet Latency	0.759 milliseconds
EMI	
FCC Class B, CE	
Dimension	81.06mm(L) × 51.76mm(W) × 25.8mm(H)
Weight	28g ± 2g

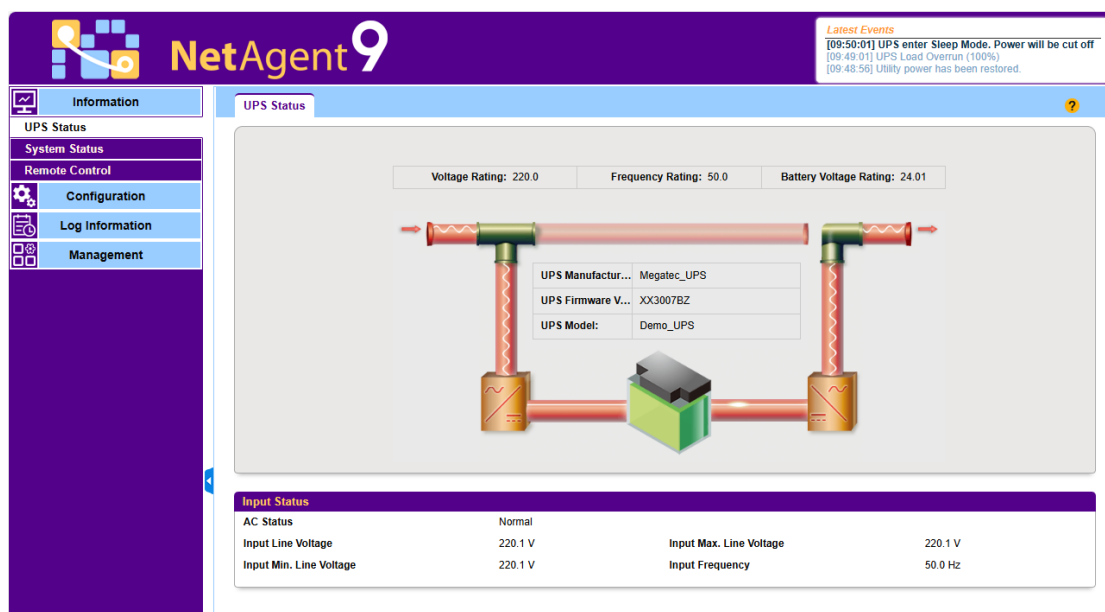


Chapter2. Functional Description

Section1. Web page user interface

■ Information > UPS Status


This page is to show the current UPS connection status in graphic mode with Voltage, Frequency and other information.



■ Information > System Status

➤ System Information

Here shows all the basic information of the DS801 such as hardware / firmware version, Serial Number, Uptime...etc.


NetAgent 9

Latest Events
[09:50:01] UPS enter Sleep Mode. Power will be cut off
[09:49:01] UPS Load Overrun (100%)
[09:48:56] Utility power has been restored.


Information
UPS Status
System Status
Remote Control
Configuration
Log Information
Management

System Information **UPS Information** Network Status ?

System Information
Hardware Version: HDS801 UPS Last Self Test: --
Firmware Version: 3.12.DS801 UPS Next Self Test: --
Serial Number: 3926642736 UPS Critical Load: 80 %
System Name: UPS Agent UPS Critical Temperature: 70.0 °C(158.0 °F)
System Contact: Administrator UPS Critical Capacity: 10 %
Location: My Office
System Time: 2025/02/05 09:50:57
Uptime: 00:04:12
Warning will be initiated 10 minute(s) before Scheduled Shutdown Event
Send Email for Daily Report (No)

➤ UPS Information

This page shows UPS information/Battery Information/Rating Information. The data is obtained from the reply of UPS or the settings from [UPS Configuration] web page.


NetAgent 9

Latest Events
[09:50:01] UPS enter Sleep Mode. Power will be cut off
[09:49:01] UPS Load Overrun (100%)
[09:48:56] Utility power has been restored.

Information
UPS Status
System Status
Remote Control
Configuration
Log Information
Management

System Information **UPS Information** Network Status ?

UPS Information
UPS Manufacturer: Megatec_UPS
UPS Firmware Version: XX3007BZ
UPS Model: Demo_UPS

Battery Information
Date of last battery replacement:
Number of Batteries: 2
Battery Charge Voltage: 2.267 V

Rating Information
Voltage Rating: 220.0 V
Frequency Rating: 50.0 Hz
Battery Voltage Rating: 24.01 V

■ Information > Remote Control

This page allows user through the network to remotely control UPS.
(Note: Different UPS protocol, allowing operations may be different.)

NetAgent9

Latest Events
[09:50:01] UPS enter Sleep Mode. Power will be cut off
[09:49:01] UPS Load Overrun (100%)
[09:48:56] Utility power has been restored.

Information
UPS Status
System Status
Remote Control
Configuration
Log Information
Management

Remote Control

UPS Testing

- ☒ 10-Second Test
- ☐ Deep Battery Test for minute(s)
- ☐ Test until battery capacity below %
- ☐ Test Until Battery Low
- ☐ Cancel Test

Miscellaneous

- ☐ Turn off UPS when AC power Fails
- ☐ Put UPS in Sleep mode for minute(s)
- ☐ Wake up UPS
- ☐ Reboot UPS
- ☐ UPS Buzzer On/Off

Apply **Reset**

■ Configuration > UPS Configuration

This page is to set some general settings of UPS, test UPS setting and alarm value setting etc.

NetAgent 9

Latest Events
[09:50:01] UPS enter Sleep Mode. Power will be cut off
[09:49:01] UPS Load Overrun (100%)
[09:48:56] Utility power has been restored.

Information

Configuration

UPS Configuration

UPS On/Off Schedule

Network

SNMP

+ Notification

Web/Telnet/FTP

System

Log Information

Management

UPS Properties

Test Log

Warning Threshold Value

?

UPS Communication Type

MegaTec

Number of Batteries

2

Battery Full Charge Voltage (V)

2.267

Battery Exhausted Charge Voltage (V)

1.666

Date of Last Battery Replacement (MM/dd/yyyy)

Apply

Reset

NetAgent 9

Latest Events
[09:50:01] UPS enter Sleep Mode. Power will be cut off
[09:49:01] UPS Load Overrun (100%)
[09:48:56] Utility power has been restored.

Information

Configuration

UPS Configuration

UPS On/Off Schedule

Network

SNMP

+ Notification

Web/Telnet/FTP

System

Log Information

Management

UPS Properties

Test Log

Warning Threshold Value

?

Test UPS

Test UPS every

Week

Test UPS on Weekday

Monday

Start Time of UPS Test (HH:mm) (24-hour time format)

09:00

UPS Test Type

Deep battery test until pre-set schedule

10

minute(s)

UPS Recorder

UPS Data Log

1

Minute(s) (0 = Stop Recording)

Apply

Reset

NetAgent 9

Latest Events
[09:50:01] UPS enter Sleep Mode. Power will be cut off
[09:49:01] UPS Load Overrun (100%)
[09:48:56] Utility power has been restored.

Information

Configuration

UPS Configuration

UPS On/Off Schedule

Network

SNMP

+ Notification

Web/Telnet/FTP

System

Log Information

Management

UPS Properties

Test Log

Warning Threshold Value

?

Time out after loss of connection

30 seconds

Critical Load (%)

80

Critical Temperature

70.0

°C

Critical Capacity (%)


10

Apply

Reset

■ Configuration > UPS On/Off Schedule

This page is to set UPS ON/OFF, Weekly and Date schedule.

**NetAgent 9**

Latest Events

[09:50:01] UPS enter Sleep Mode. Power will be cut off
[09:49:01] UPS Load Overrun (100%)
[09:48:56] Utility power has been restored.

Information

Configuration

UPS Configuration

UPS On/Off Schedule

Network

SNMP

+ Notification

Web/Telnet/FTP

System

Log Information

Management

UPS Action

Remote Shutdown

Weekly Schedule


Date Schedule

Wake On Lan

During 00:00 - 23:59, if UPS Load Overrun occur, then turn off UPS after 1 minutes.

AddReset

No.	During Time Interval(HH:mm)	Event	Device	Delay Time	Delete
1	00:00 - 13:00	UPS Load Overrun	UPS	1	<input type="checkbox"/>
2	13:05 - 23:59	AC Power Failed	UPS	1	<input type="checkbox"/>
3	00:00 - 23:59	UPS Battery Low	host1(192.168.5.46)	1	<input type="checkbox"/>

**NetAgent 9**

Latest Events

[09:50:01] UPS enter Sleep Mode. Power will be cut off
[09:49:01] UPS Load Overrun (100%)
[09:48:56] Utility power has been restored.

UPS Action

Remote Shutdown

Weekly Schedule

Date Schedule

Wake On Lan

	Domain Name / IP	Login Mode	Port	User Name	Password	Shutdown Commands	
Host1	192.168.5.46	SSH	22	admin	*****	halt	Test
Host2		SSH	22			halt	Test
Host3		SSH	22			halt	Test
Host4		SSH	22			halt	Test
Host5		SSH	22			halt	Test
Host6		SSH	22			halt	Test
Host7		SSH	22			halt	Test
Host8		SSH	22			halt	Test

ApplyReset

■ Configuration > Network

This page is to set DS801 network settings. Support IPv4, DDNS and PPPoE.

NetAgent9

Latest Events
[09:50:01] UPS enter Sleep Mode. Power will be cut off
[09:49:01] UPS Load Overrun (100%)
[09:48:56] Utility power has been restored.

Information

Configuration

UPS Configuration

UPS On/Off Schedule

Network

SNMP

+ Notification

Web/Telnet/FTP

System

Log Information

Management

IPv4

Ethernet

Dynamic DNS

PPPoE

IP Address

IP Address192.168.5.176

Subnet Mask255.255.255.0

Gateway192.168.5.2

Obtain an IP address *Using DHCP

DNS Server IP

Primary DNS Server IP202.96.128.86

Secondary DNS Server IP8.8.8.8

Obtain DNS Server IPAutomatically

*: System will reboot when these items have been Applied.

ApplyReset

NetAgent9

Latest Events
[09:50:01] UPS enter Sleep Mode. Power will be cut off
[09:49:01] UPS Load Overrun (100%)
[09:48:56] Utility power has been restored.

Information

Configuration

UPS Configuration

UPS On/Off Schedule

Network

SNMP

+ Notification

Web/Telnet/FTP

System

Log Information

Management

IPv4

Ethernet

Dynamic DNS

PPPoE

Connection TypeAuto Sense

Stop UPS communication when Ethernet disconnectedNo

Modbus on TCP Device ID *1 (-1 = Out of service)

*: System will reboot when these items have been Applied.

ApplyReset

NetAgent9

Latest Events
[09:50:01] UPS enter Sleep Mode. Power will be cut off
[09:49:01] UPS Load Overrun (100%)
[09:48:56] Utility power has been restored.

Information

Configuration

UPS Configuration

UPS On/Off Schedule

Network

SNMP

+ Notification

Web/Telnet/FTP

System

Log Information

Management

IPv4

Ethernet

Dynamic DNS

PPPoE

Service Providericv99.net

Domain Name3926642736.icv99.net

Login Name3926642736

Login Password

Use external STUN server to get Public IP to registerNo

Primary STUN Server IP167.99.25.205

Secondary STUN Server IP

*: System will reboot when these items have been Applied.

ApplyReset

■ Configuration > SNMP

This page is to set DS801 SNMP settings. Support SNMP v1, v2c and v3; TRAP support SNMPv1 Trap, SNMPv2 Trap, SNMPv2 Inform, SNMPv3 Trap, SNMPv3 Inform.

NetAgent 9

Latest Events
[23:49:14] Connection with time server failed.
[09:50:01] UPS enter Sleep Mode. Power will be cut off
[09:49:01] UPS Load Overrun (100%)

Information

Configuration

UPS Configuration

UPS On/Off Schedule

Network

SNMP

+ Notification

Web/Telnet/FTP

System

Log Information

Management

General

Access Control

Trap Notification

Device Connected

Manager IP Address

Version

Community

Permission

Description

User Name

Auth. Protocol

Auth. Password

Privacy Protocol

Privacy Password

Apply

Reset

NetAgent 9

Latest Events
[23:49:14] Connection with time server failed.
[09:50:01] UPS enter Sleep Mode. Power will be cut off
[09:49:01] UPS Load Overrun (100%)

Information

Configuration

UPS Configuration

UPS On/Off Schedule

Network

SNMP

+ Notification

Web/Telnet/FTP

System

Log Information

Management

General

Access Control

Trap Notification

Device Connected

Trap Notification

Destination IP

Accept

Community

Trap Type

Severity

Description

Events

User Name

Auth. Protocol

Auth. Password

Privacy Protocol

Privacy Password

Manager Engine ID

Select

Test

Send Power Restore and Adapter Restore Traps for 0 time(s) in 0 second(s) interval.

SNMP Inform Request

Number of Retries

Timeout (sec)

Apply

Reset

■ Configuration > Notification

This page is to set DS801 Email settings and SMS settings.

NetAgent 9

Latest Events

[23:49:14] Connection with time server failed.
[09:50:01] UPS enter Sleep Mode. Power will be cut off
[09:49:01] UPS Load Overrun (100%)

Information

Configuration

UPS Configuration

UPS On/Off Schedule

Network

SNMP

Notification

Email

SMS

Web/Telnet/FTP

System

Log Information

Management

Email Setting

Email for Event Log

Email for Daily Report

Email Server

Email Port

Enable SSL on Email Transmission

Sender's Email Address

Email Server Requires Authentication

Account Name

Password

Sending test mail

25

SSL/TLS

YES

Test Mail

Apply

Reset

NetAgent 9

Latest Events

[23:49:14] Connection with time server failed.
[09:50:01] UPS enter Sleep Mode. Power will be cut off
[09:49:01] UPS Load Overrun (100%)

Information

Configuration

UPS Configuration

UPS On/Off Schedule

Network

SNMP

Notification

Email

SMS

Web/Telnet/FTP

System

Log Information

Management

SMS Setting

Mobile for Event Log

SMS Server

SMS Port

Account Name

Password

Sending test SMS

192.168.5.46

80

Test SMS

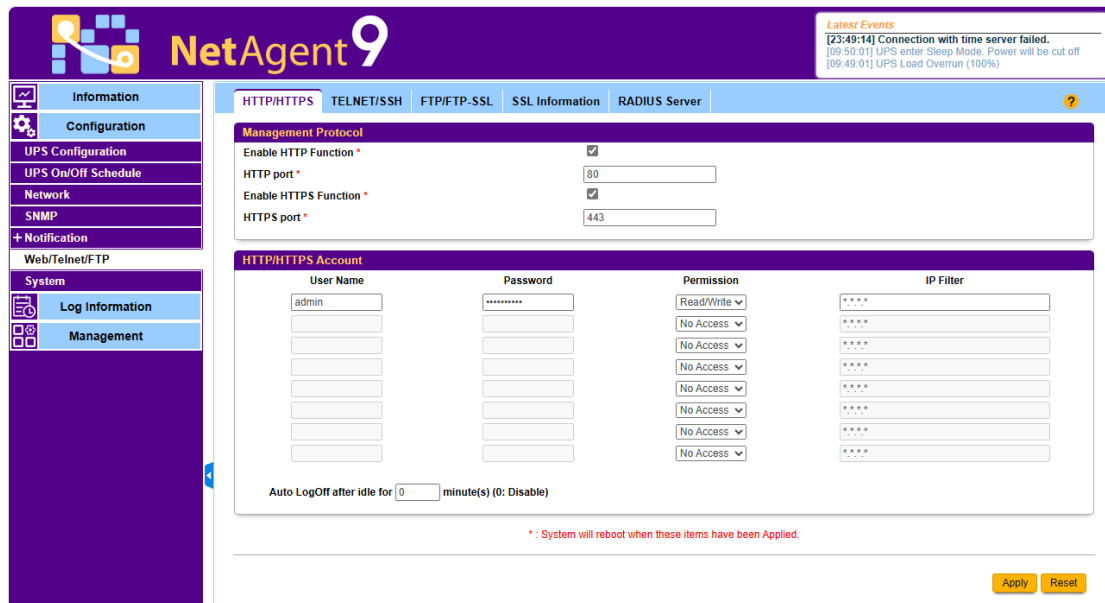
Apply

Reset

■ Configuration > Web/Telnet/FTP

To set permission for each user account for Web, Telnet and FTP access with up to eight users. Also to enable/disable specific port for HTTP/HTTPS, Telnet/ SSH and FTP/FTPS.

In addition, RADIUS server related settings could be also set here.



NetAgent 9

Latest Events
[23:49:14] Connection with time server failed.
[09:50:01] UPS enter Sleep Mode. Power will be cut off
[09:49:01] UPS Load Overrun (100%)

Configuration
Information
Configuration
UPS Configuration
UPS On/Off Schedule
Network
SNMP
+ Notification
Web/Telnet/FTP
System
Log Information
Management

HTTP/HTTPS TELNET/SSH FTP/FTP-SSL SSL Information RADIUS Server

Management Protocol

Enable HTTP Function * ☒
HTTP port * 80
Enable HTTPS Function * ☒
HTTPS port * 443

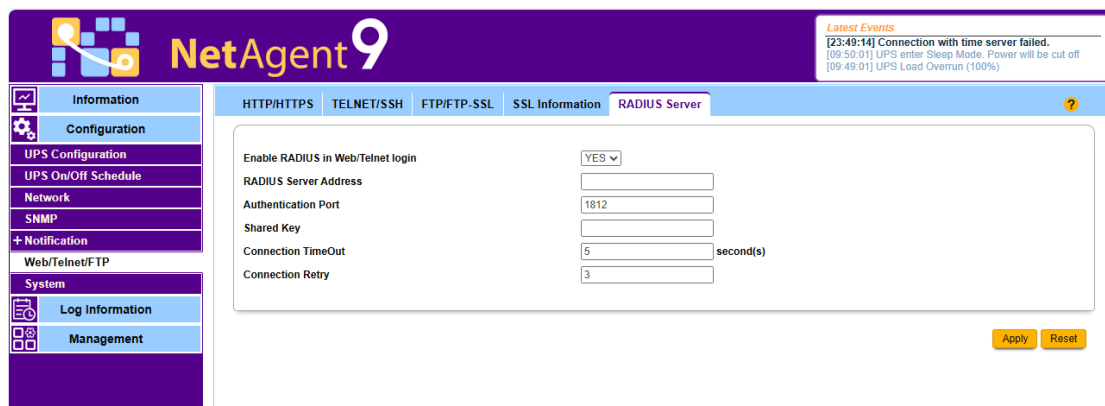
HTTP/HTTPS Account

User Name	Password	Permission	IP Filter
admin	*****	Read/Write	****
		No Access	****
		No Access	****
		No Access	****
		No Access	****
		No Access	****
		No Access	****
		No Access	****

Auto LogOff after idle for 0 minute(s) (0: Disable)

*: System will reboot when these items have been Applied.

Apply Reset



NetAgent 9

Latest Events
[23:49:14] Connection with time server failed.
[09:50:01] UPS enter Sleep Mode. Power will be cut off
[09:49:01] UPS Load Overrun (100%)

Configuration
Information
Configuration
UPS Configuration
UPS On/Off Schedule
Network
SNMP
+ Notification
Web/Telnet/FTP
System
Log Information
Management

HTTP/HTTPS TELNET/SSH FTP/FTP-SSL SSL Information **RADIUS Server**

Enable RADIUS in Web/Telnet login YES

RADIUS Server Address

Authentication Port 1812

Shared Key

Connection TimeOut 5 second(s)

Connection Retry 3

Apply Reset

■ Configuration > System

This page is to set DS801 system time, language and configuration.

NetAgent 9

Latest Events

[23:49:14] Connection with time server failed.
[09:50:01] UPS enter Sleep Mode. Power will be cut off
[09:49:01] UPS Load Overrun (100%)

Information

Configuration

UPS Configuration

UPS On/Off Schedule

Network

SNMP

+ Notification

Web/Telnet/FTP

System

Log Information

Management

Date/Time

Language

Save/Restore

System Time

System Time (yyyy/MM/dd HH:mm:ss) 2025/02/05 01:08:36

Time Between Automatic Updates 1 Hour

Time Server pool.ntp.org Edit

Time Zone (Relative to GMT) GMT

Using Daylight Saving Time NO

Apply Reset

Restart

Auto Restart System for Every (0: Disable) 0 Minute(s)

Manual Restart System After 30 Seconds

Apply Reset

NetAgent 9

Latest Events

[23:49:14] Connection with time server failed.
[09:50:01] UPS enter Sleep Mode. Power will be cut off
[09:49:01] UPS Load Overrun (100%)

Information

Configuration

UPS Configuration

UPS On/Off Schedule

Network

SNMP

+ Notification

Web/Telnet/FTP

System

Log Information

Management

Date/Time

Language

Save/Restore

Interface Language

☒ English

☐ 繁體中文

☐ 简体中文

(Note: Setting preferences will not work if you have disabled cookies in your browser.)

Email Preferences

Use below interface language in Email Wechat and SMS notification English

Apply Reset

NetAgent 9

Latest Events

[23:49:14] Connection with time server failed.
[09:50:01] UPS enter Sleep Mode. Power will be cut off
[09:49:01] UPS Load Overrun (100%)

Information

Configuration

UPS Configuration

UPS On/Off Schedule

Network

SNMP

+ Notification

Web/Telnet/FTP

System

Log Information

Management

Date/Time

Language

Save/Restore

Save current configuration Unencrypted(for upload on other device)

Restore previous configuration 选择文件 未选择文件

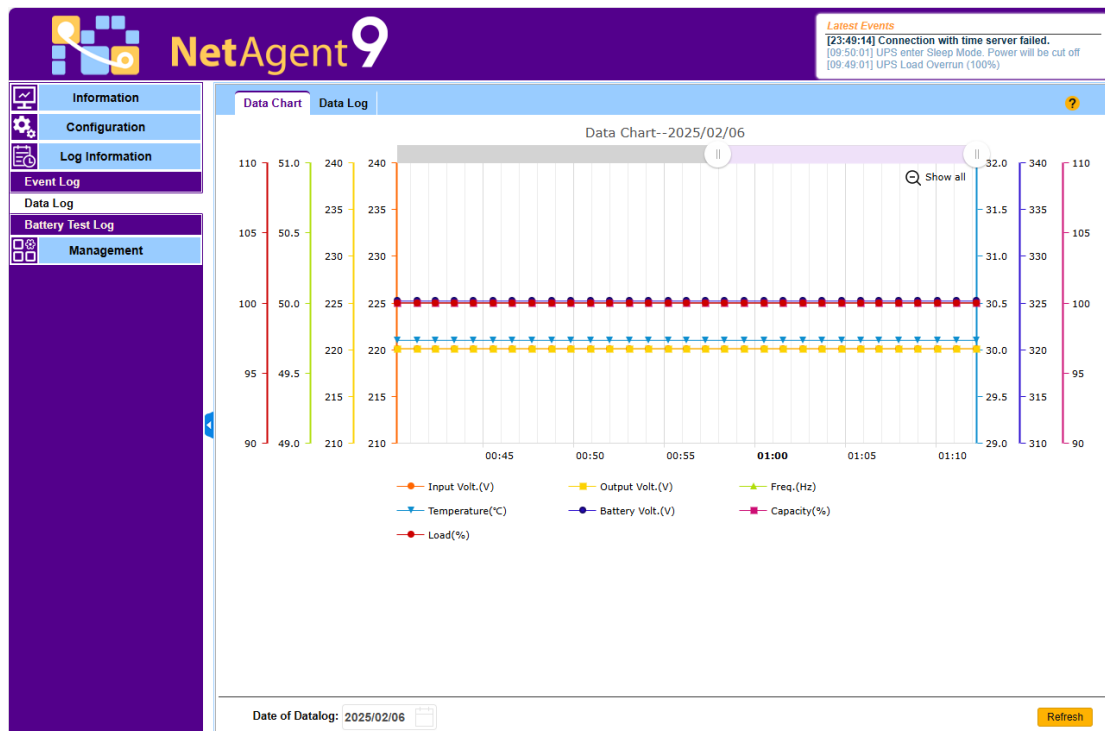
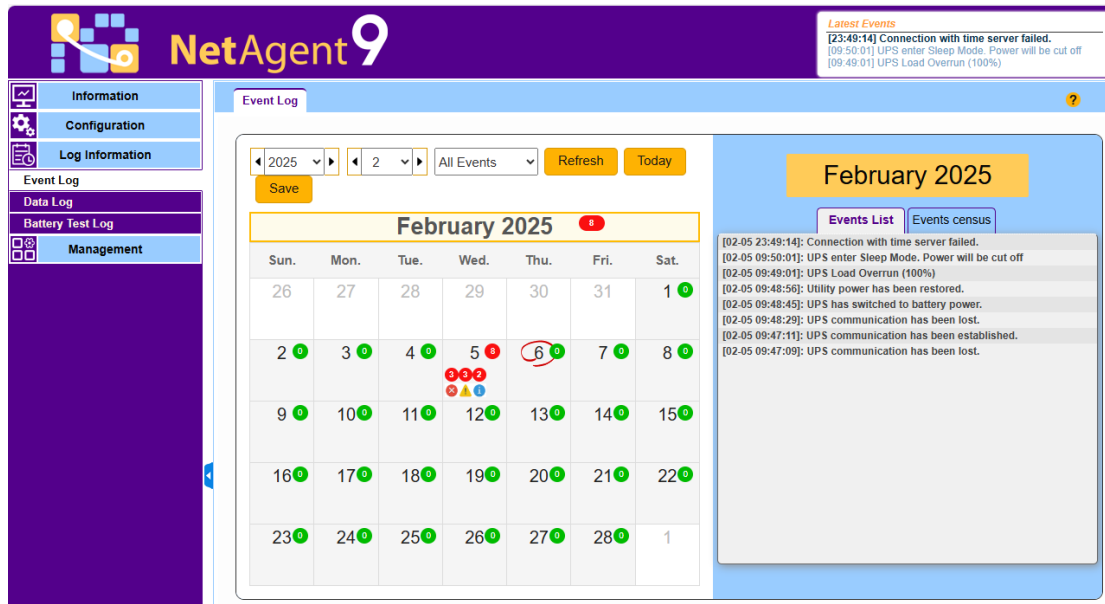
Reset to factory default

Save Restore Reset

■ Log Information

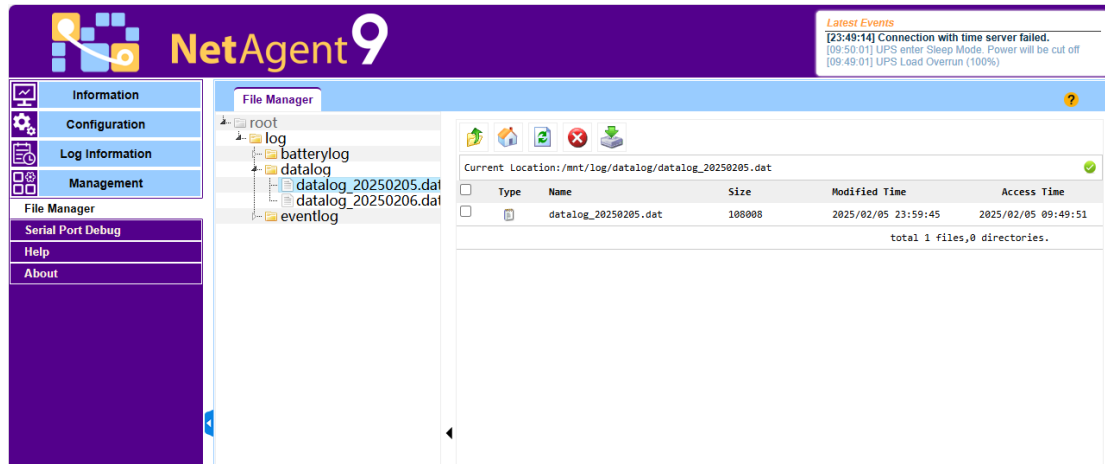
This includes Event Log, Data Log, and Battery Test Log.

Log can be saved as files on the computer.



■ Management > File Manager

This is manage log file generates by DS801. Specific log.dat can be download, delete. Once dat. file is deleted, the log record will also be erased on the Log display under Log Information.



■ Management > Serial Port Debug

It shows the communication status between DS801 and UPS by Sent and Received columns.

NetAgent9

Latest Events
[23:49:14] Connection with time server failed.
[09:50:01] UPS enter Sleep Mode. Power will be cut off
[09:49:01] UPS Load Overrun (100%)

Serial Port Debug

Debug Information Port Information

☒ ASCII ☐ Hexadecimal

Send Content **Send**

Sent Information **Clear**

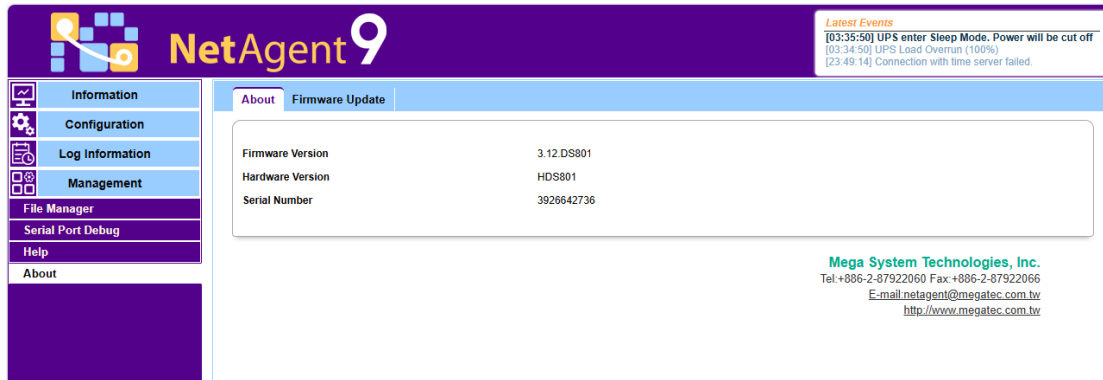
2025/02/06 09:14:24	I'r
2025/02/06 09:14:22	Q1r
2025/02/06 09:14:22	Flr
2025/02/06 09:14:22	Q1r
2025/02/06 09:14:22	Flr
2025/02/06 09:14:22	I'r
2025/02/06 09:14:22	Q1r
2025/02/06 09:14:22	Flr
2025/02/06 09:14:22	I'r
2025/02/06 09:14:22	Q1r
2025/02/06 09:14:22	Flr

Received Information **Clear**

2025/02/06 09:14:24	#Megatec_UPS Demo_UPS XX3007BZ \r
2025/02/06 09:14:24	(220.1 190.5 220.1 100 50.0 27.1 30.1 00000000)r
2025/02/06 09:14:22	(220.1 190.5 220.1 100 50.0 27.1 30.1 00000000)r
2025/02/06 09:14:22	#220.0 030 24.01 50.0r
2025/02/06 09:14:22	#Megatec_UPS Demo_UPS XX3007BZ \r
2025/02/06 09:14:22	(220.1 190.5 220.1 100 50.0 27.1 30.1 00000000)r
2025/02/06 09:14:22	#220.0 030 24.01 50.0r
2025/02/06 09:14:22	#Megatec_UPS Demo_UPS XX3007BZ \r
2025/02/06 09:14:22	(220.1 190.5 220.1 100 50.0 27.1 30.1 00000000)r
2025/02/06 09:14:22	#220.0 030 24.01 50.0r
2025/02/06 09:14:22	#Megatec_UPS Demo_UPS XX3007BZ \r

■ Management > About

It shows DS801 hardware/firmware version and serial number, and DS801 firmware can also be upgraded via FTP or Web here.



The screenshot shows the 'About' page of the NetAgent 9 web interface. The left sidebar contains a menu with options: Information, Configuration, Log Information, Management, File Manager, Serial Port Debug, Help, and About. The main content area displays the following information:

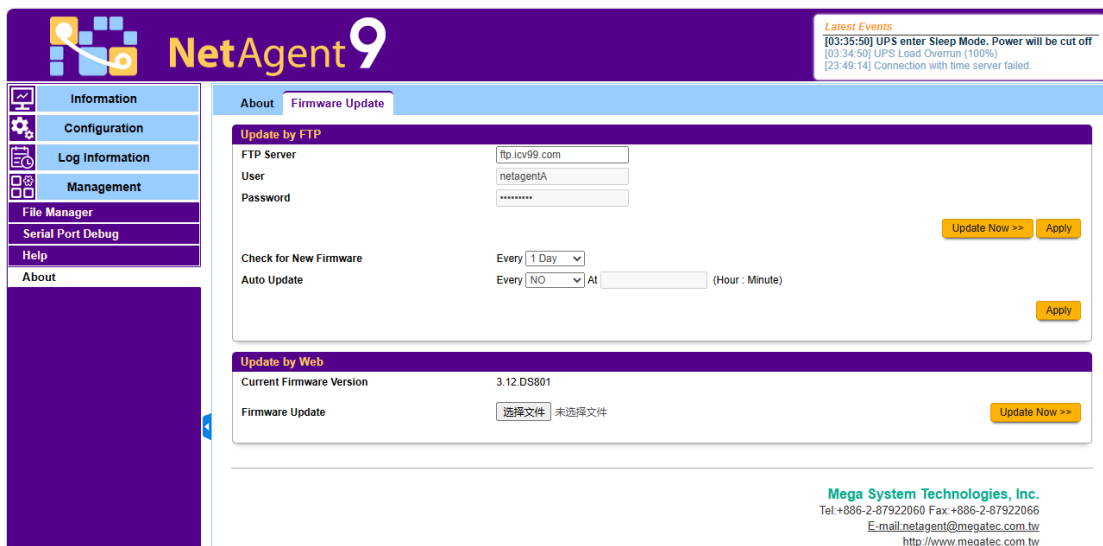
About	
Firmware Version	3.12.DS801
Hardware Version	HDS801
Serial Number	3926642736

Below the table, the contact information for Mega System Technologies, Inc. is provided:

Mega System Technologies, Inc.
Tel: +886-2-87922060 Fax: +886-2-87922066
E-mail: netagent@megatec.com.tw
<http://www.megatec.com.tw>

In the top right corner, a 'Latest Events' box shows the following log entries:

- [03:35:50] UPS enter Sleep Mode. Power will be cut off
- [03:34:50] UPS Load Overrun (100%)
- [23:49:14] Connection with time server failed.



The screenshot shows the 'Firmware Update' page of the NetAgent 9 web interface. The left sidebar is identical to the previous screenshot. The main content area is divided into two sections:

Update by FTP

FTP Server:
User:
Password:

Check for New Firmware: Every
Auto Update: Every At
(Hour : Minute)

Update by Web

Current Firmware Version: 3.12.DS801
Firmware Update: 未选择文件

At the bottom, the contact information for Mega System Technologies, Inc. is repeated:

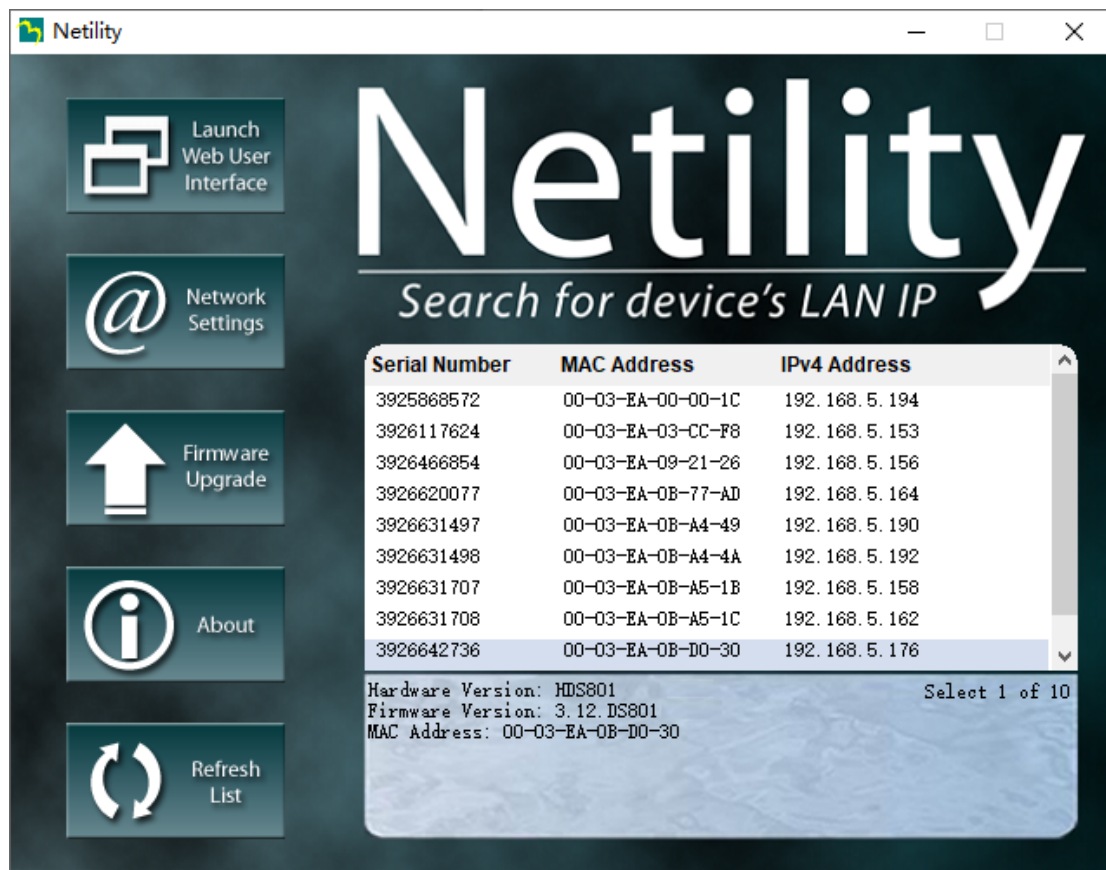
Mega System Technologies, Inc.
Tel: +886-2-87922060 Fax: +886-2-87922066
E-mail: netagent@megatec.com.tw
<http://www.megatec.com.tw>

The 'Latest Events' box in the top right corner is also identical to the previous screenshot.

Section2. Free software

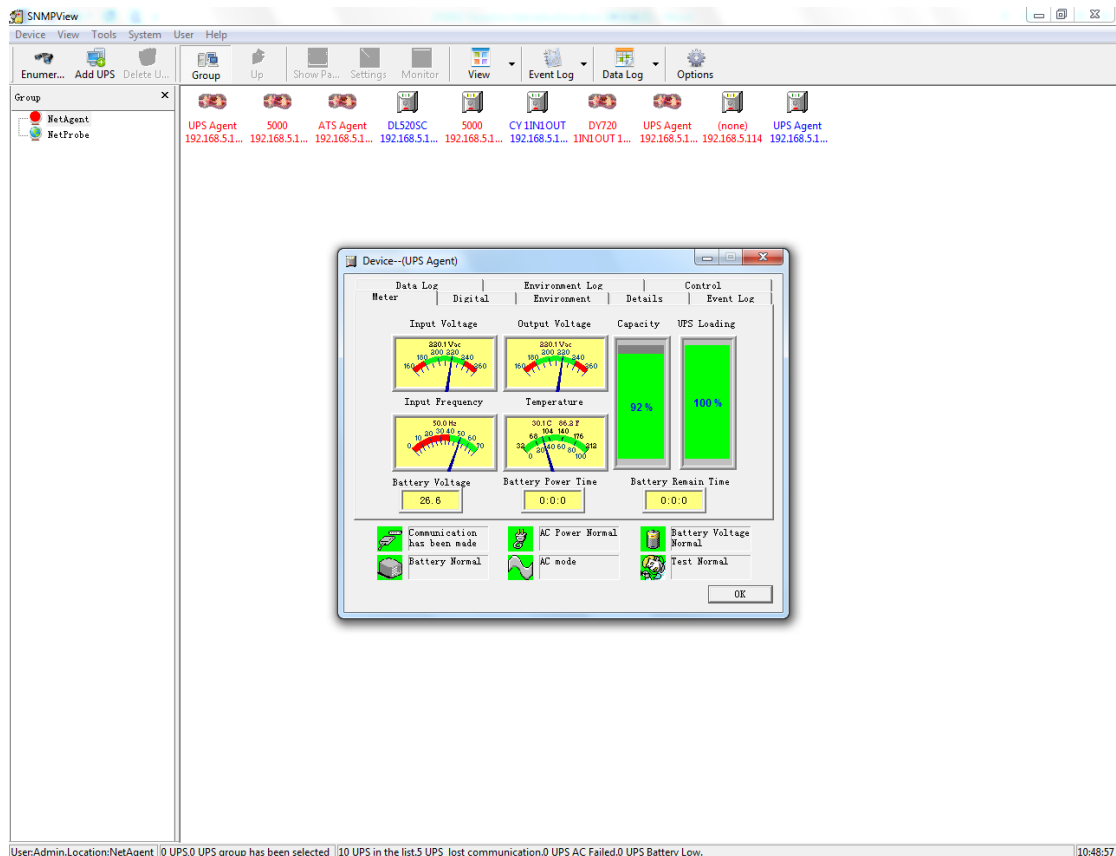
2.1 Netility

The software is necessary software to install DS801. Netility can set up the DS801 IP address and other network settings.



2.2 SNMPView

The software is centralized monitoring software. The software can send SMS event notification and alarm (required GSM Modem), email alarm and sound alarm etc.



2.3 SMS server

The software is used for Windows. Connect GSM Modem to PC, after the completion of settings; a SMS server platform is finished. DS801 can send SMS event notification and alarm by SMS server.

2.4 ClientMate

The software is used for Windows, Linux and MAC. When ClientMate get the power failure signal (AC Fail, Battery Low, Schedule Shutdown) from the DS801, ClientMate will save the files and shutdown the system gracefully.





Naicon

UNIT



Diloc



Elsist



Naicon srl Via il Caravaggio, 25 Trecella I 20060 Pozzuolo Martesana - Milano (Italy)
Tel. +39 02 95.003.1 Fax +39 02 95.003.313 www.naicon.com e-mail: naicon@naicon.com