

SNMP

Network card CY504



TECHNICAL SPECIFICATION

An SNMP card allows you to monitor the status of the UPS remotely via an IP connection. This allows system administrators to monitor UPS operation from any location, without having to be physically present at the UPS.

It is possible to configure various useful functions to monitor the correct operation of the UPS.

The card is inserted into the appropriate slot on the rear panel of the UPS and, using the appropriate software, it is possible to access the web page to monitor the correct operation of the UPS.

Main Features and Functionalities

- **Remote Management:** Monitoring of parameters such as voltage, load, battery status remotely.
- **Notifications and Alerts:** Automatic sending of real-time emails in case of anomalies, blackouts or overloads.
- **Automatic Shutdown:** Ability to safely shut down networked servers during an extended power outage.
- **Web Interface and Setup:** Configuration via browser (web interface) and connection via RJ45 connector (10/100 Mbit).
- **Protocols:** Support SNMP v1/v2/v3, HTTP, HTTPS, TCP/IP, SMTP, DHCP.

Main Benefits

- **Full Control:** Centralized or distributed supervision of multiple UPSs at different sites.
- **Proactivity:** Rapid interventions thanks to the reporting of anomalies, preventing failures.
- **Energy Saving:** Optimization of performance and consumption.

- Centralized UPS monitoring and management
- Supports HTTPS, SSL, SSH, SNMPv3, IPv6
- Supports RFC1628, UPS-MIB e PPC-MIB
- Supports Modbus on TCP/IP
- Schedule periodic UPS self-test
- UPS event/data logging

1. General Specification

CPU	ARM 266MHz 32Bit
System Clock	208MHz
Flash Memory	8M Byte
SDRAM	32M Byte
LED	5
Watch Dog	Yes
USB Port	No
Environment Port	No
Real Time Clock	Yes
LCD Display	No
LAN Interface	10M/100M UTP
Ethernet Throughput	1620K Byte per seconds
Ethernet Latency	0.759 milliseconds

2. Power Specification

NetAgent 9

ITEM	MINIMUM	MAXIMUM
DC Input Voltage	+5.3V	+40V
DC Input Current		3W Maximum

3. Pin Assignment

PIN	INPUT/OUTPUT	DESCRIPTION
P1 GND	GND	Ground PIN
P2 PowerIn	Input	DC power input.
P3 RS232_TXD	Output	+5.5V and -5.5V Voltage level for RS232
P4 RS232_RXD	Input	-3V to -15V for logic '1', +3V to +15V for logic '0'
P5-P7 No Use		
P8 SNMPSIG		NetAgent card plug in detect, connect to PIN 10
P9 GND	GND	Ground PIN
P10 SNMPSIG		NetAgent card plug in detect, connect to PIN 8
P11 RS232_DCD	Input	+/-3V to +/-15V for RS232
P12 RS232_DTR	Output	+5.5V and -5.5V for RS232
P13 No Use		
P14 RS232_RTS	Output	+5.5V and -5.5V for RS232
P15 RS232_CTS	Input	+/-3V to +/-15V for RS232
P16-P26 No Use		

4. Signal Specification

Receiver Inputs

PARAMETER	CONDITIONS	MIN	TYP	MAX
Input Voltage Range		-25V		+25 V
Input Threshold Low	TA = +25°C	+0.6V	+1.2V	
Input Threshold High	TA = +25°C		+1.5V	+2.4V
Input Hysteresis			0.3 V	
Input Resistance	TA = +25°C	3 kohm	5 kohm	7 kohm

Transmitter Outputs

PARAMETER	CONDITIONS	MIN	TYP	MAX
Output Voltage Swing	All transmitter outputs loaded with 3 kohm to ground	±5.0V	±5.4V	
Output Resistance	TA = +25°C	300	10M	
Output Short-Circuit Current			±35 mA	±60 mA

5. Environment Specification

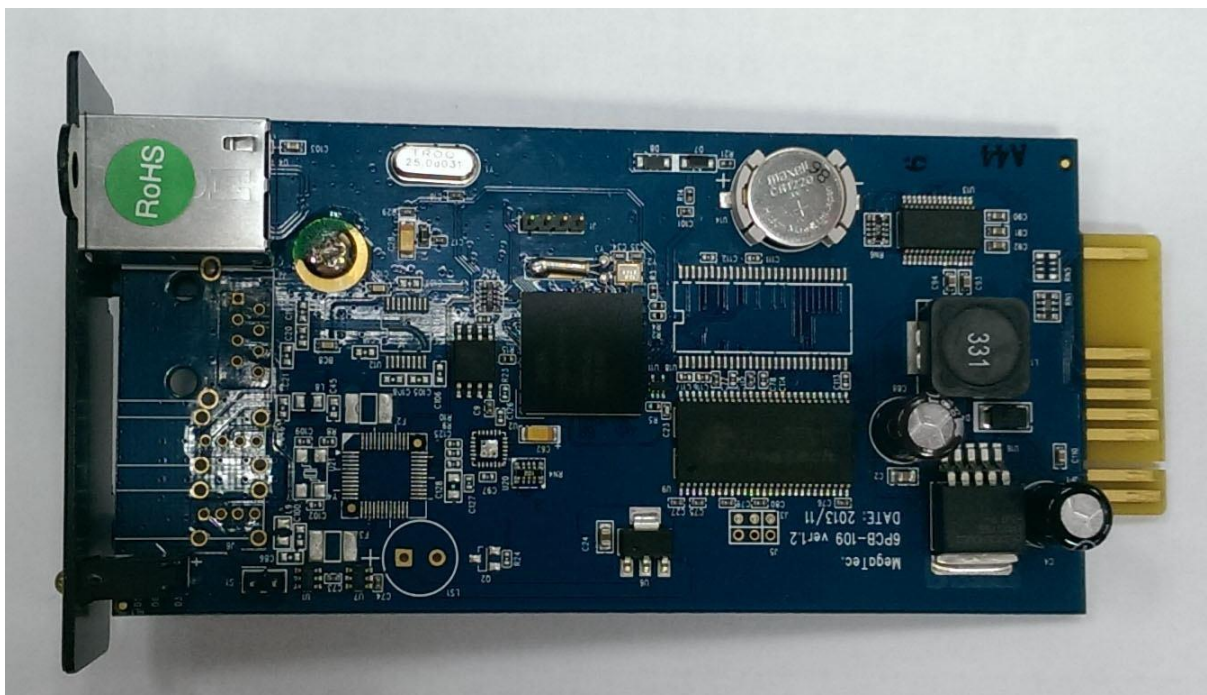
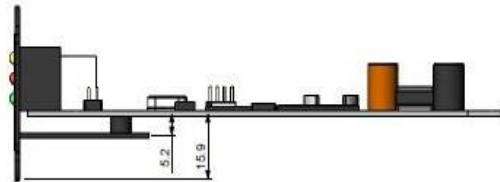
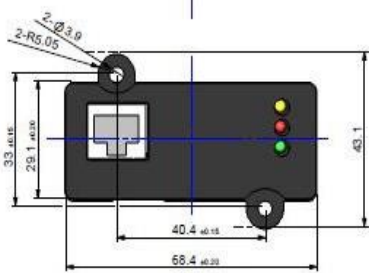
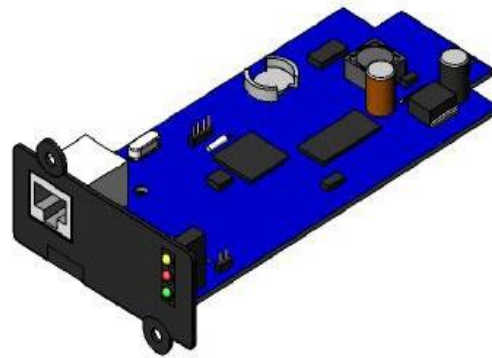
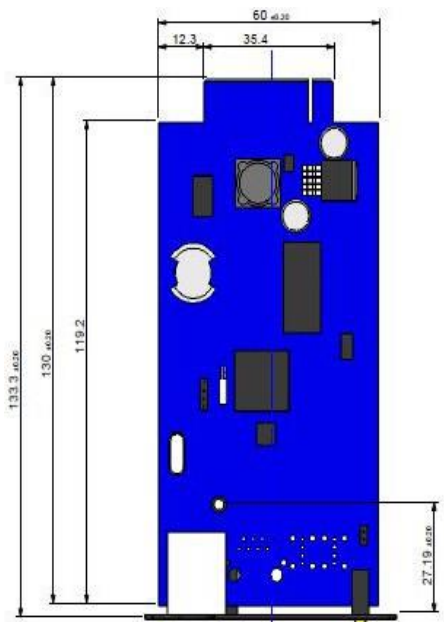
PARAMETER	CONDITIONS	Minimum	Maximum
Operating Temperature		0 °C	60 °C
Storage Temperature		-40 °C	125 °C
Operating Humidity	Non-Condensing	10% RH	90% RH
Storage Humidity	Non-Condensing	5% RH	95% RH

EMI
FCC Class B, CE

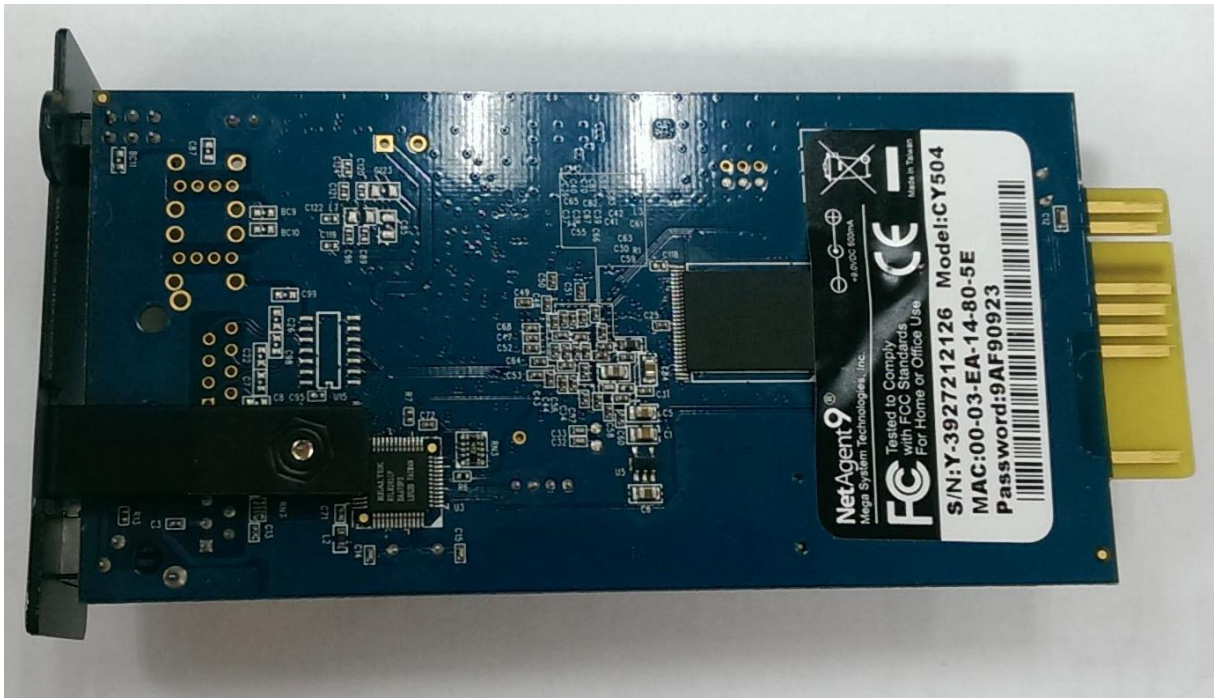
6. Dimension and Outlook

NetAgent 9 Internal Card

Dimension	133.3mm(L) x 68.4mm(W) x 43.1mm(H)
Weight	70.0g ± 2g
Connector	26 pin gold finger.



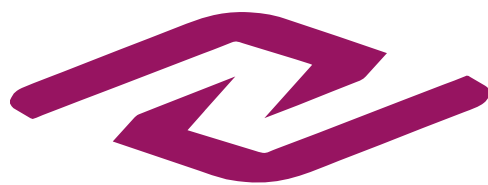
Top view



Bottom view



Side view



Naicon

UNIT



Diloc



Elsist



Naicon srl Via il Caravaggio, 25 Trecella I 20060 Pozzuolo Martesana - Milano (Italy)
Tel. +39 02 95.003.1 Fax +39 02 95.003.313 www.naicon.com e-mail: naicon@naicon.com

